

# SISBY

High-Quality Sites  
High-Quality Consultation  
High-Quality Partners



[www.sisby.de](http://www.sisby.de)



Assoc. of Bavarian Chambers of  
Commerce and Industry  
BIHK



## High-Quality Sites – Basis of a Robust Economy in Bavaria

In the past few years, the economy in Bavaria has experienced a strong upwards trend. The basis for this dynamic economic development are healthy companies that conduct their business at attractive locations throughout all of Bavaria. And the Bavarian labor market as well has also developed in recent years in an above average manner. In some administrative districts in the Free State of Bavaria full employment – as this is currently defined – prevails. The positive development of these past years manifested itself among other ways in an increase in the investment demands of companies. In connection with this, there has also been a pick-up in inquiries re-

garding economic sites. Besides foreign companies searching for suitable sites, there were also above all companies with their seat of business in Germany or Bavaria that put their domestic and foreign locations under scrutiny. A definite trend thereby became evident that leaned in the direction of high-quality sites with attractive economic frameworks – quality instead of cash flow. For over ten years now the Site Information System Bayern (SISBY) has been providing reliable information about sites in Bavaria that meet the quality demands of investors and entrepreneurs.

www.sisby.de

### What Exactly Does SISBY Offer? 3,500 Commercial Sites throughout Bavaria and Much More

For investors and entrepreneurs, SISBY is the source of detailed information on a publicly accessible and free-of-charge basis on approximately 3,500 commercial sites available immediately or on short notice with an immediate settlement potential of around 19,520 acres (as of August 2008). At the interface between the economy and administrative bodies, SISBY offers a collection of site portraits of all the Bavarian communities and districts. Besides information on available commercial sites, SISBY provides information on each site regarding:

- > all the contact persons of the local and regional economic promotional agencies
- > selected structural data, such as e.g. trade tax factors
- > science parks and start-up centers
- > commercial real estate offers

Furthermore, SISBY also offers the user the following functions:

- > an automatic synopsis for each site
- > detailed, interactive site maps – for all of Bavaria
- > an address search function for Bavaria, accurate to individual houses
- > an online form for advertising real estate offers

### Commercial Site Balance

Commercial site and settlement potential in governmental and IHK (Chamber of Commerce and Industry – CCI) districts in 2008 in acres

|   | Commercial site potential in acres <sup>1)</sup> | Immediate settlement potential in acres <sup>2)</sup> |
|---|--|---|
| Govt. distr. Upper Bavaria                  | 4,887.1  | 2,725.5   |
| Govt. distr. Lower Bavaria <sup>3)</sup>    | 3,797.7  | 2,554.2   |
| Govt. distr. Upper Palatinate <sup>4)</sup> | 4,207.4  | 2,712.2   |
| Govt. distr. Upper Franconia <sup>5)</sup>  | 4,255.8  | 3,111.7   |
| Govt. distr. Middle Franconia               | 3,904.4  | 2,785.1   |
| Govt. distr. Lower Franconia <sup>6)</sup>  | 4,739.4  | 3,058.1   |
| Govt. distr. Swabia                         | 5,694.4  | 2,588.9   |
| <b>Bavaria</b>                              | <b>31,486.0</b>                                  | <b>19,537.0</b>                                       |

- 1) Acquisition and availability according to building legislation: guaranteed at least long-term
- 2) Acquisition: possible immediately or on short term; availability according to building legislation: guaranteed immediately
- 3) CCI Passau: 3,316.6 and 2,297.8 acres
- 4) CCI Regensburg: 4,688.5 and 2,969.9 acres
- 5) CCI Bayreuth: 3,881.0 and 2,795.9 acres  
CCI Coburg: 374.9 and 315.8 acres
- 6) CCI Wuerzburg-Schweinfurt: 4,037.9 and 2,505.6 acres  
CCI Aschaffenburg: 701.5 and 552.5 acres



A Bavarian commercial property as seen from the air

Source: Hafen Nuremberg-Roth GmbH

Between September 2007 and August 2008 more than 11,000 businesses seeking suitable sites per month used the SISBY website and they thereby called up an average of 63,000 pages. These continually high access figures demonstrate the value placed on the SISBY website by investors and entrepreneurs. The hit list of the communities also shows that interest is not merely concentrated on metropolitan areas; a great number of the sites queried were located in rather characteristically rural regions.

## High-Quality Consultation – Added Value for the Economy!

In SISBY, current and comparative site data is available in the Internet in the form of comprehensive initial information. Behind SISBY there is a qualified network of competent consultants and contact persons who actively assist interested parties in their search for appropriate sites and who establish the required contacts so that the investor and the community on site find each other quickly. The consultants at the CCl, at 'Invest in Bavaria' as well as at the regional and local economic promotion agencies support resident companies in all questions concerning site planning. Remaining at the old location and expanding there or relocating the company is a

decision that middle-sized companies face more frequently now than in former times – maintaining and developing the current economic strengths have the highest priority. Besides this, SISBY also represents the foundation for new settlements of companies, domestic as well as foreign. Thus you can also find the most important information in SISBY additionally in the English language. Indeed, the CCl, 'Invest in Bavaria', the district offices and the communities themselves have a common goal: healthy and continually successful businesses that provide jobs for the population.

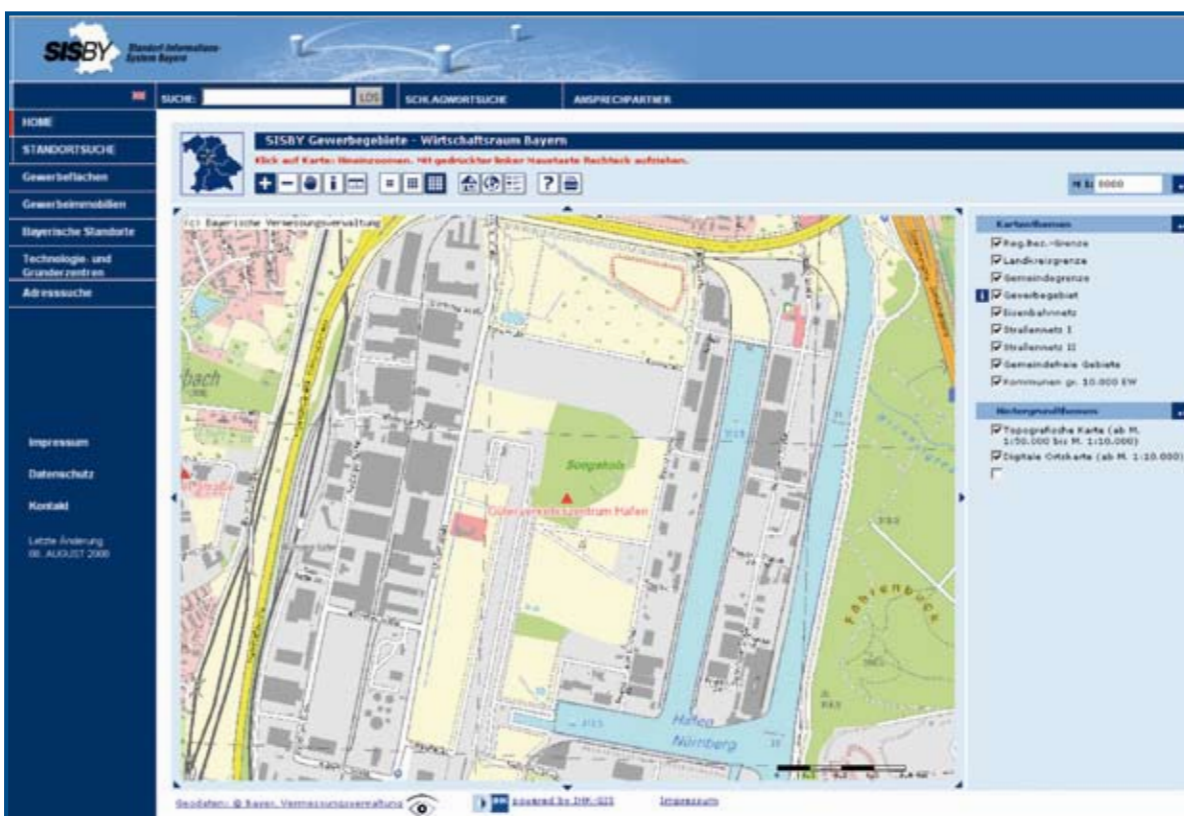
[www.sisby.de](http://www.sisby.de)

## High-Quality Partners – Prerequisite for Reliable Site Information

Smaller and middle-sized companies on site or national investors and global players – they all need dependable data and information in order to assess existing and future locations. For once a decision has been made regarding a site it is often difficult to revise it. And the favorable selection of a site is an essential success factor for a company. In order to support our customers in their search for a site, we have developed SISBY, a customized package with all relevant information on potential locations in Bavaria – current, comprehensive and for free. The electronic maps of the Bavarian Surveying Administration (BW) are integrated for the display and analysis of site information. Communities, districts, CCl, ministries and other official authorities have combined their

efforts to be able to offer you this service: strong partners in locating the right site!

As the operators of SISBY, the cooperation partners, the Association of Bavarian Chambers of Commerce and Industry and 'Invest in Bavaria', are continuously developing the system further, so that we can offer you best possible service. Most recent developments make it possible for the communities and districts to update and maintain their site data themselves. Thus SISBY achieves a status that is even more up-to-date. And you profit from these fast as possible reaction times!



The commercial property displayed on the left as it appears in SISBY.

## Contact persons on site



**CCI for Munich and Upper Bavaria**  
 >> Kristof Hofmeister  
 Max-Joseph-Str. 2, 80333 Munich  
 Tel. 089 5116-117, Fax -8117  
 hofmeister@muenchen.ihk.de  
 www.muenchen.ihk.de



**CCI for Lower Bavaria in Passau**  
 >> Claudia Schreiner  
 Nibelungenstr. 15, 94032 Passau  
 Tel. 0851 507-204, Fax -280  
 schreiner.claudia@passau.ihk.de  
 www.passau.ihk.de



**CCI Regensburg**  
 >> Christa Fischer  
 D.-Martin-Luther-Str. 12  
 93047 Regensburg  
 Tel. 0941 5694-242, Fax -5242  
 fischer@regensburg.ihk.de  
 www.ihk-regensburg.de



**CCI for Upper Franconia Bayreuth**  
 >> Jens Korn  
 Bahnhofstraße 25, 95444 Bayreuth  
 Tel. 0921 886-260, Fax -9260  
 korn@bayreuth.ihk.de  
 www.bayreuth.ihk.de



**CCI Wuerzburg-Schweinfurt**  
 >> Johannes Cesko  
 Mainaustr. 33, 97082 Wuerzburg  
 Tel. 0931 4194-201, Fax -88201  
 cesko@wuerzburg.ihk.de  
 www.wuerzburg.ihk.de



**CCI Coburg**  
 >> Patricia Leistner-Wolf  
 Schloßplatz 5, Palais Edinburg  
 96450 Coburg  
 Tel. 09561 7426-27, Fax -50  
 patricia.leistner-wolf@coburg.ihk.de  
 www.coburg.ihk.de



**CCI Swabia**  
 >> Andrea Gärtner  
 Stettenstr. 1+3, 86150 Augsburg  
 Tel. 0821 3162-318, Fax-172  
 andrea.gaertner@schwaben.ihk.de  
 www.schwaben.ihk.de



**CCI Nuremberg for Middle Franconia**  
 >> Martina Stengel  
 Hauptmarkt 25-27, 90403 Nuremberg  
 Tel. 0911 1335-452, Fax -333  
 stengel@nuernberg.ihk.de  
 www.ihk-nuernberg.de



**CCI Aschaffenburg**  
 >> Markus Greber  
 Kerschensteinerstr. 9  
 63741 Aschaffenburg  
 Tel. 06021 880-161, Fax -22161  
 greber@aschaffenburg.ihk.de  
 www.aschaffenburg.ihk.de

## Contact persons in the Ministry of Economic Affairs

Bavarian State Ministry for Economic Affairs, Infrastructure, Transportation and Technology

>> Dr. Johann Niggel, Manager Invest in Bavaria Prinzregentenstr. 28. 80538 München  
 Tel. 089 2162-2642, Fax -2803  
 info@invest-in-bavaria.de  
 www.invest-in-bavaria.de

Responsible persons:  
 Association of Bavarian Chambers of Commerce and Industry, BHK  
 Andreas Fritzsche  
 Editorial staff: Martina Stengel, Andrea Gärtner, Andreas Fritzsche, Kristof Hofmeister

Date: September 2008  
 You can find all the SISBY Milestones as downloads at [www.sisby.de](http://www.sisby.de) under the heading „About Us“