

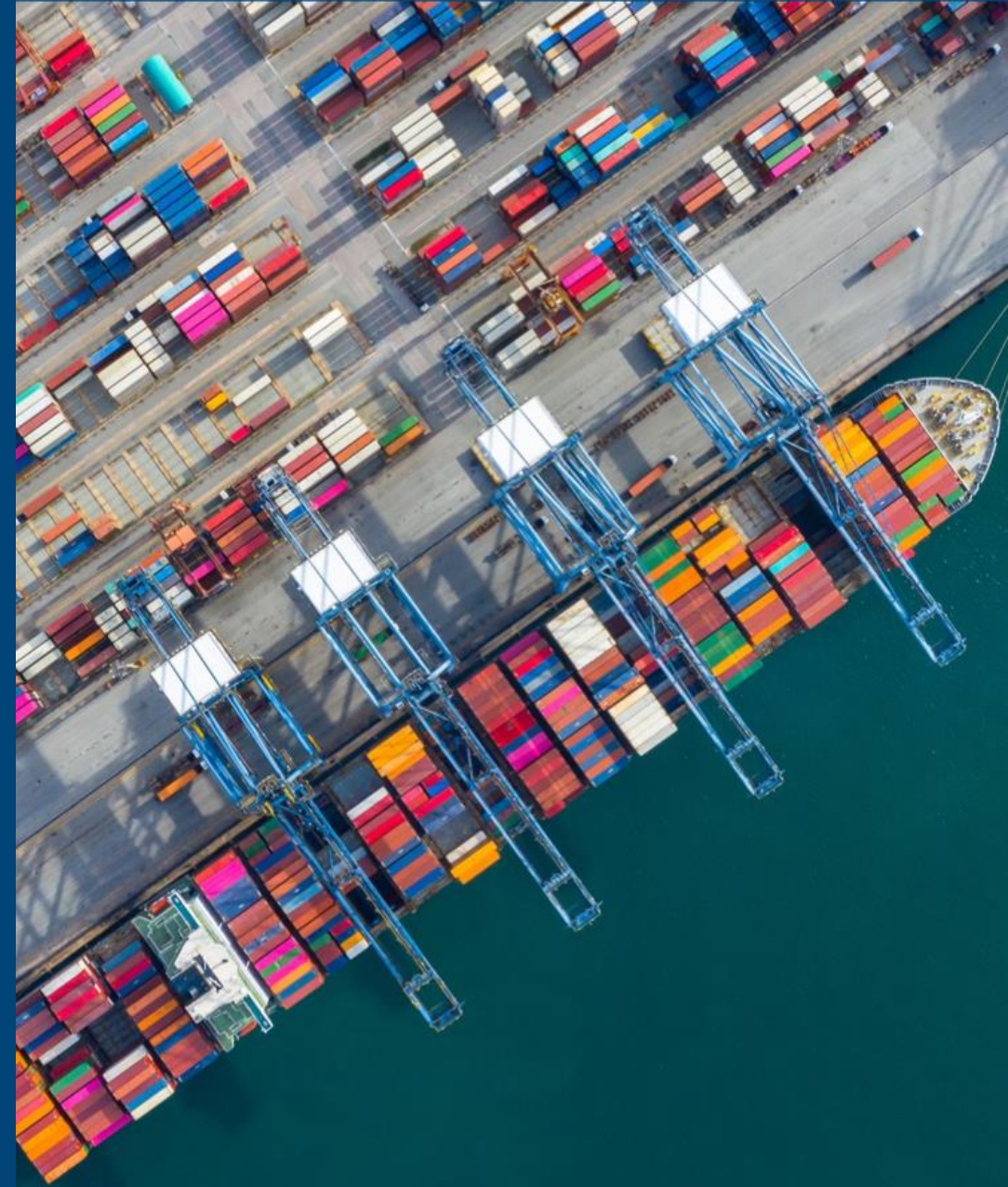
# Digitisation in port logistics

How we digitised the Dutch ports and its community

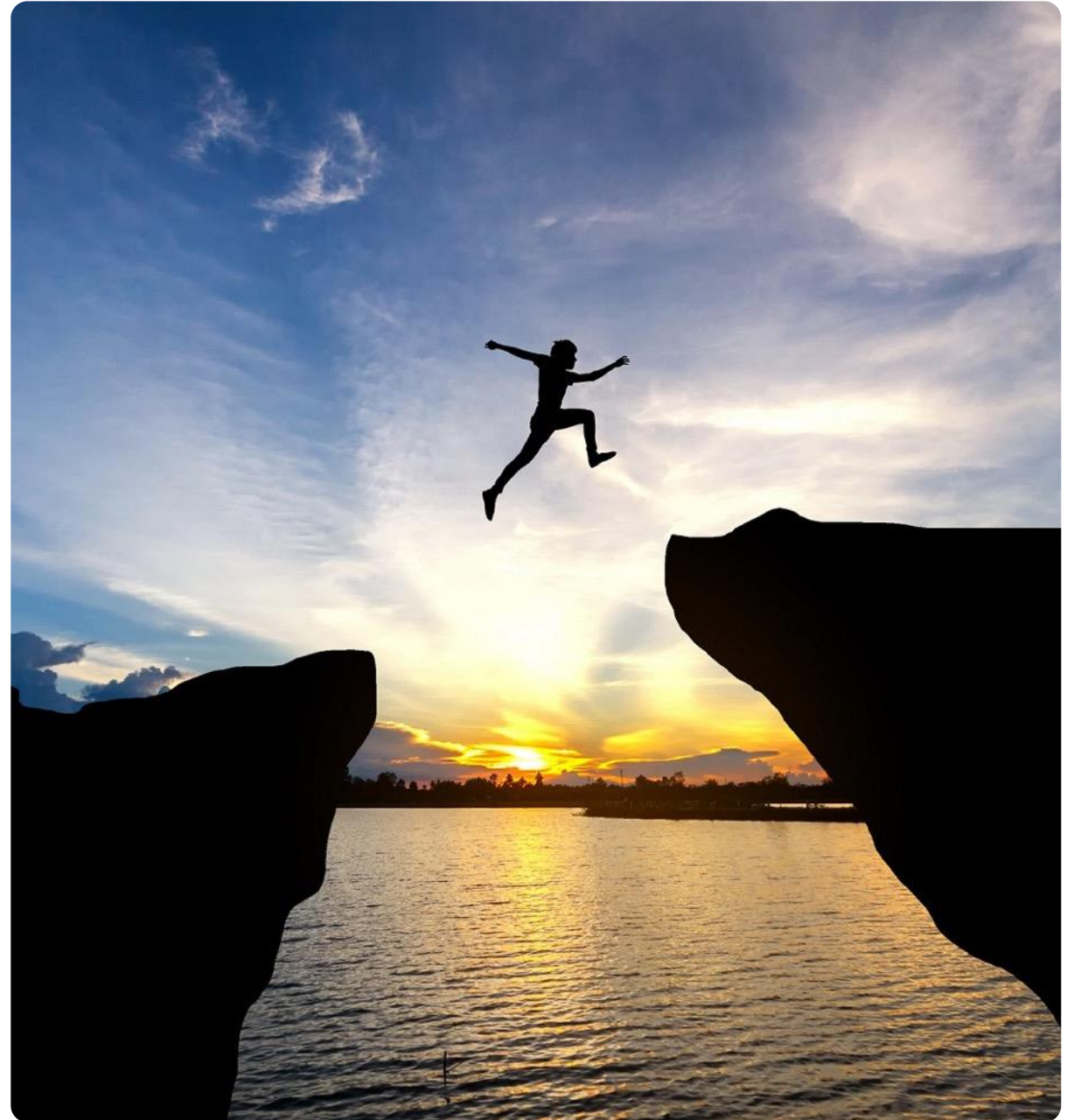
March 8th 2023

portbase<sup>®</sup>

Keeping  
things  
moving



“  
**Ports stand  
for a leap in  
data sharing.”**



# Mission

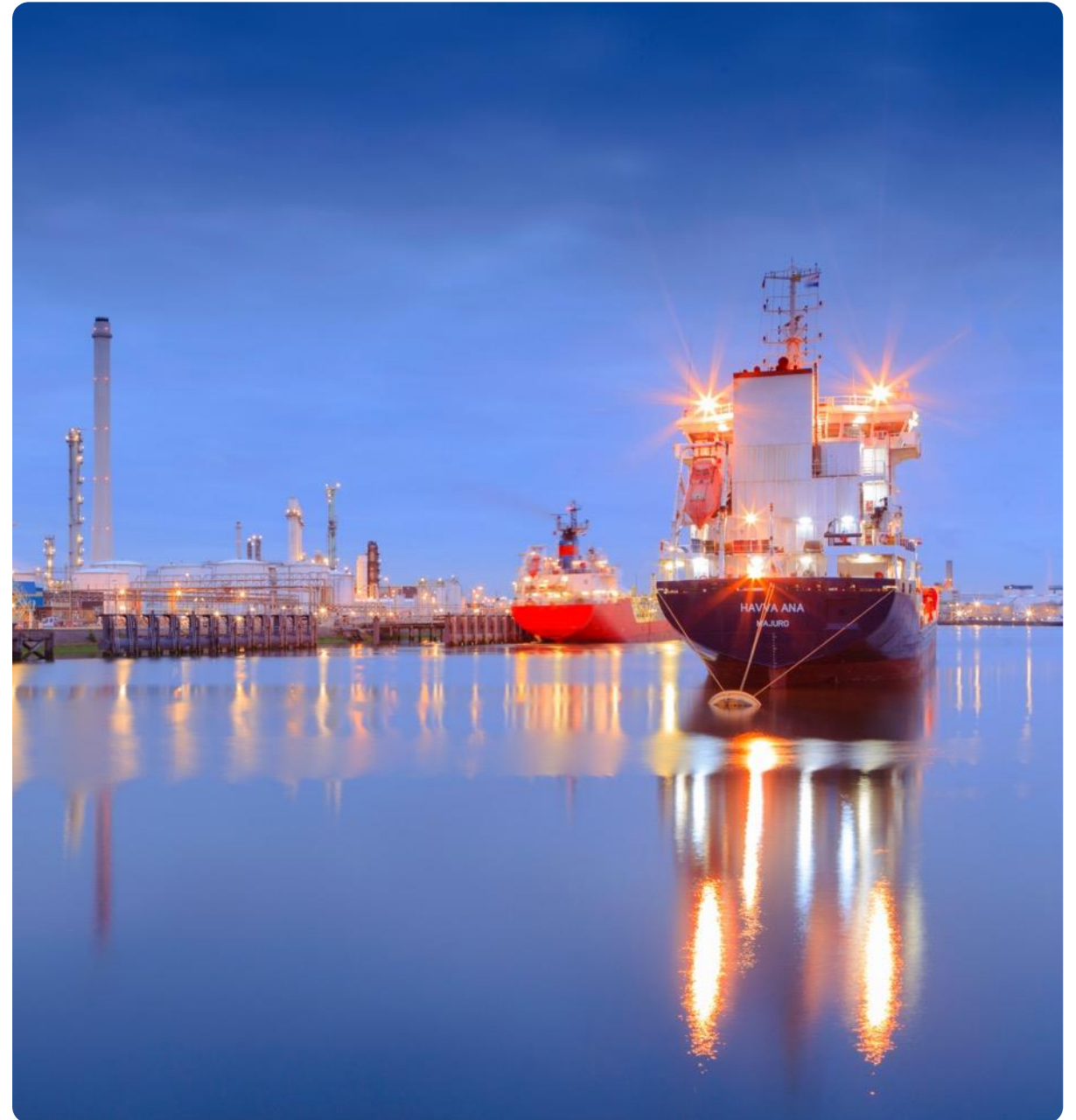
Building the smartest port communities.  
Together we unlock the potential of data to  
create a seamless, sustainable and secure  
flow of goods.



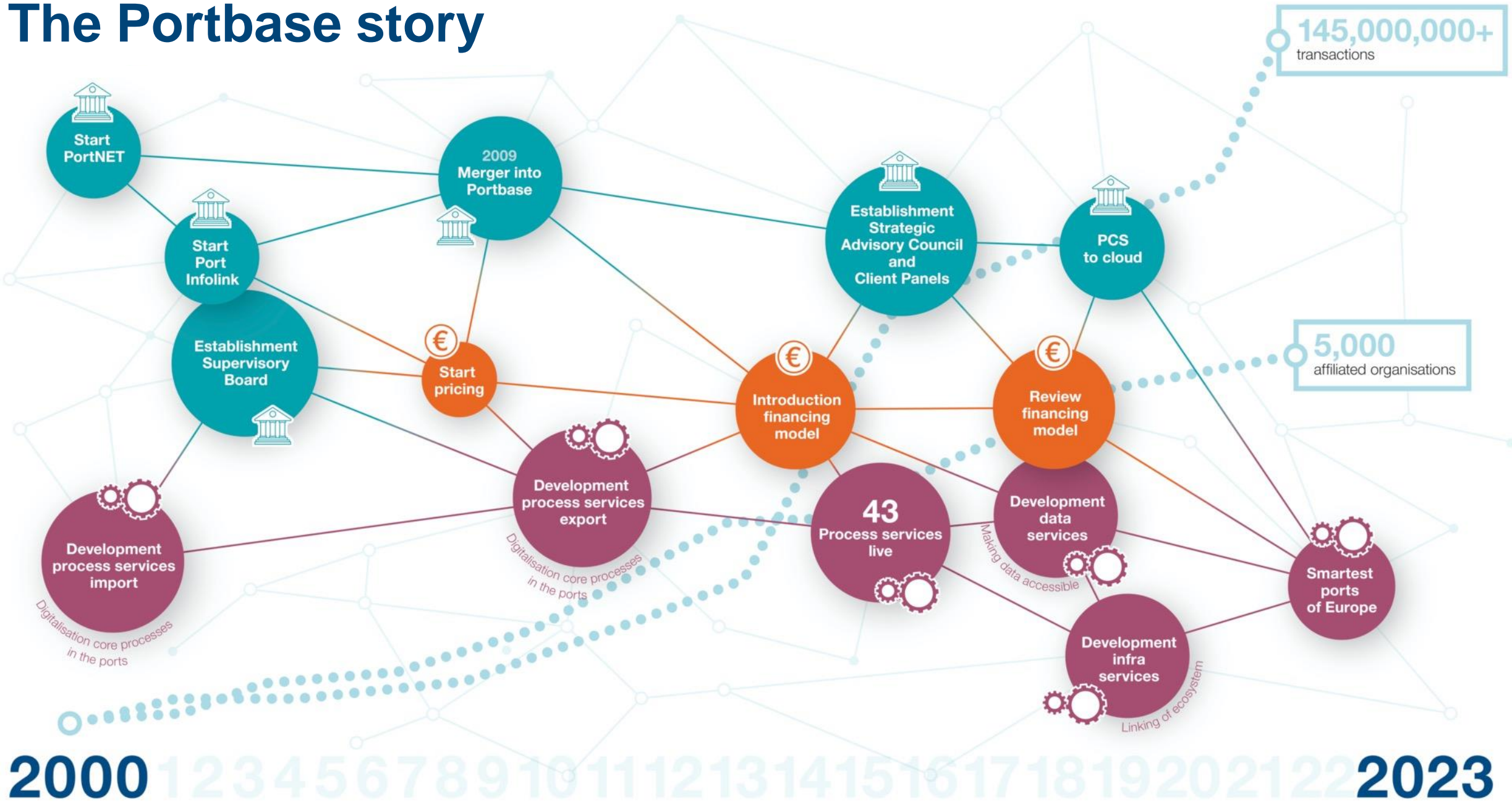
# Meet Portbase

Neutral platform with national coverage that serves as a stable basis for operational excellence in Dutch ports.

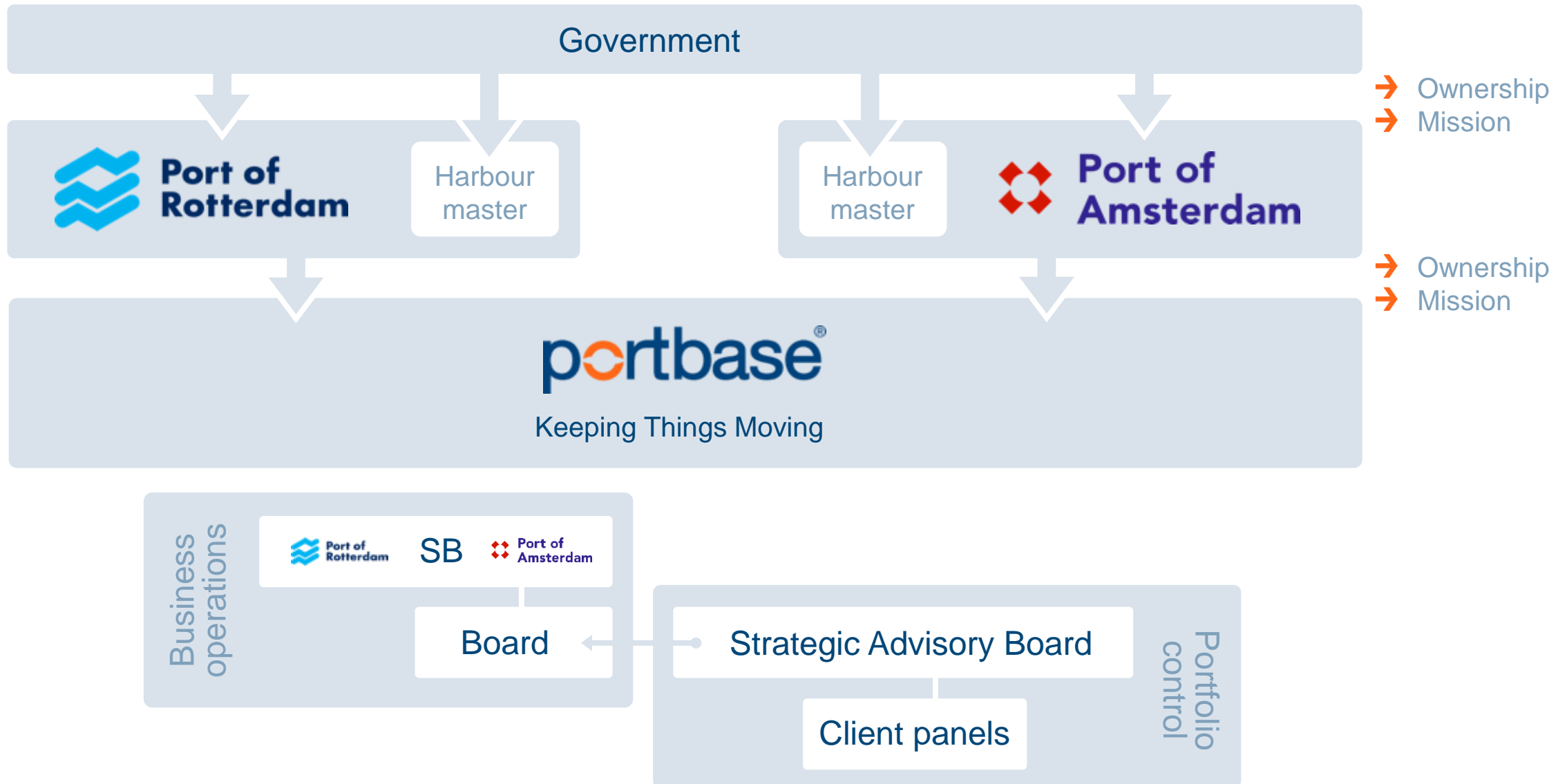
- 
- Non-profit organisation, utility
  - Shareholders: Port of Rotterdam (75%) and Port of Amsterdam (25%)
  - National Port Community System (PCS) since 2002
  - Leading PCS global, largest PCS in Europe
  - From, for and by the port community



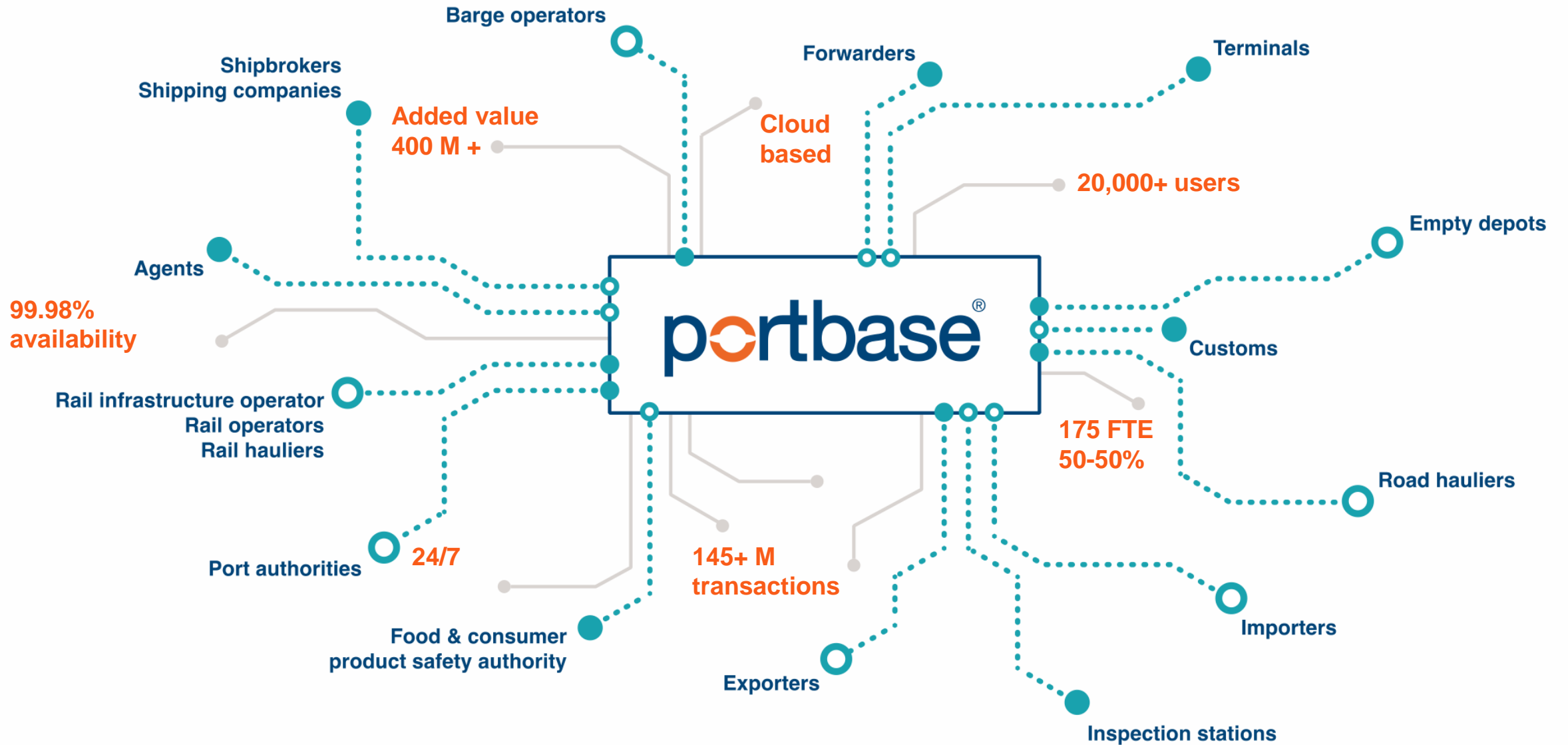
# The Portbase story



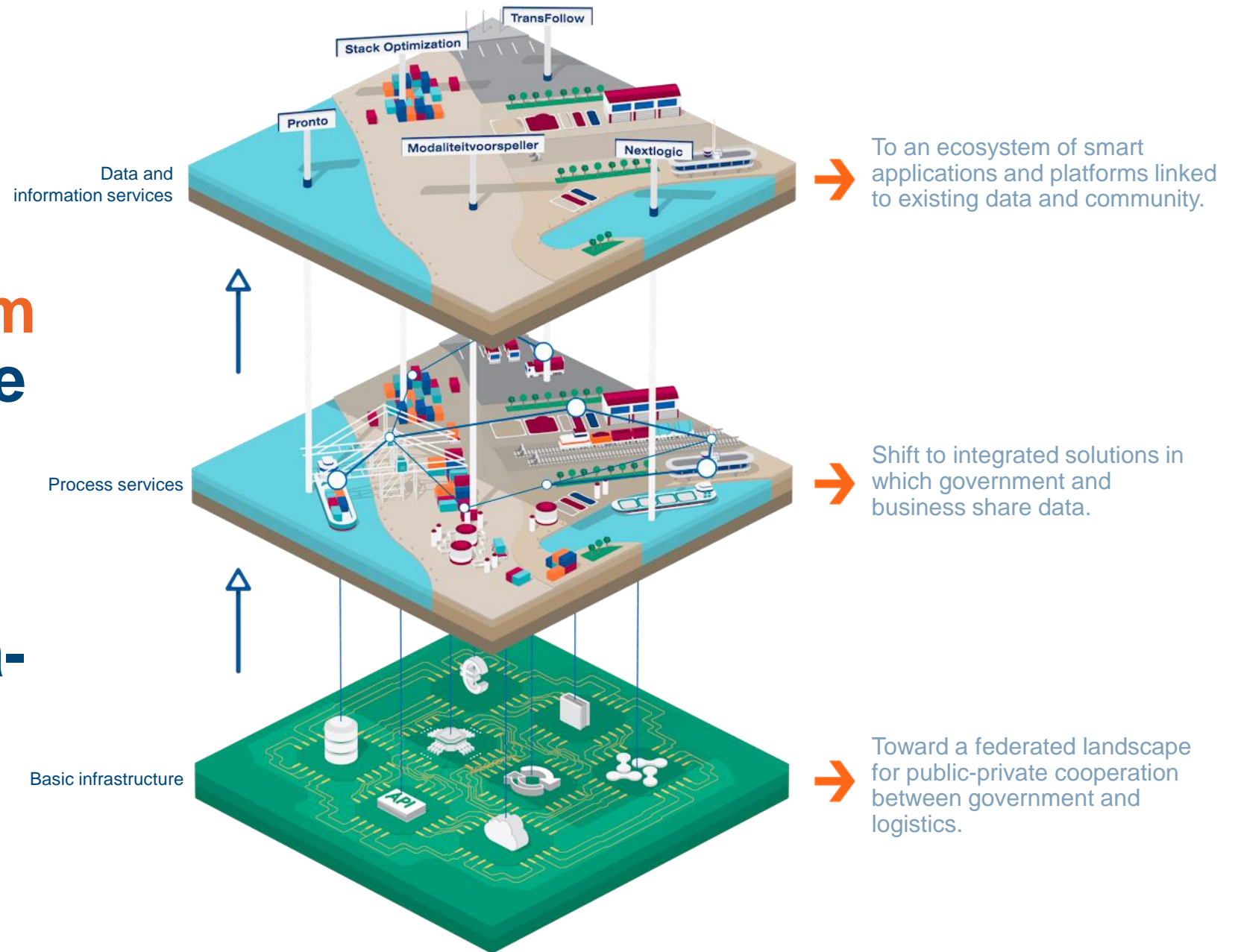
# Governance



# With Portbase: a connected port



# Neutral port logistics platform for public-private collaboration with seamless, secure and sustainable data- sharing





# Services in four port domains on one platform

## Ships' calls

Services for agents, shipping lines and cargo handling agents active in bulk and containers for handling ships' calls.

## Import cargo

These services help agents, shipping lines, cargo handling agents, importers and forwarders to import efficiently.

## Hinterland transport

Smart services for road, barge and rail sectors.

## Export cargo

Services for forwarders, exporters, agents, shipping lines and cargo handling agents for handling export formalities.

## 7 services

→ 100% ship's calls

## 18 services

→ 100% customs  
→ 30% cargo info

## 8 services

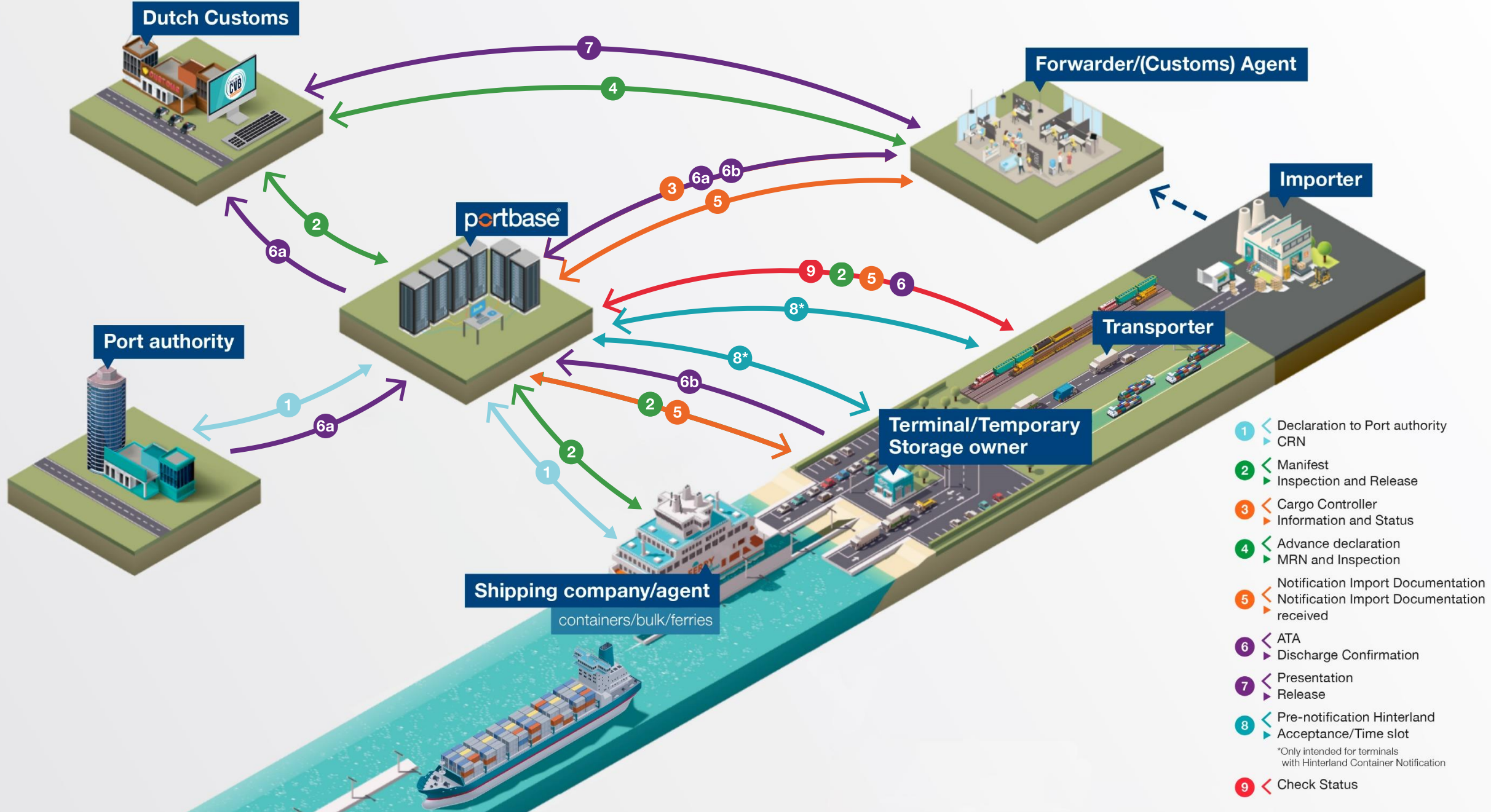
→ 100% pre-notification

## 11 services

→ 100% customs



# Import proces



- 1 < Declaration to Port authority  
> CRN
- 2 < Manifest  
> Inspection and Release
- 3 < Cargo Controller  
> Information and Status
- 4 < Advance declaration  
> MRN and Inspection
- 5 < Notification Import Documentation  
> Notification Import Documentation received
- 6 < ATA  
> Discharge Confirmation
- 7 < Presentation  
> Release
- 8 < Pre-notification Hinterland  
> Acceptance/Time slot  
\*Only intended for terminals with Hinterland Container Notification
- 9 < Check Status

# Together our added value keeps growing

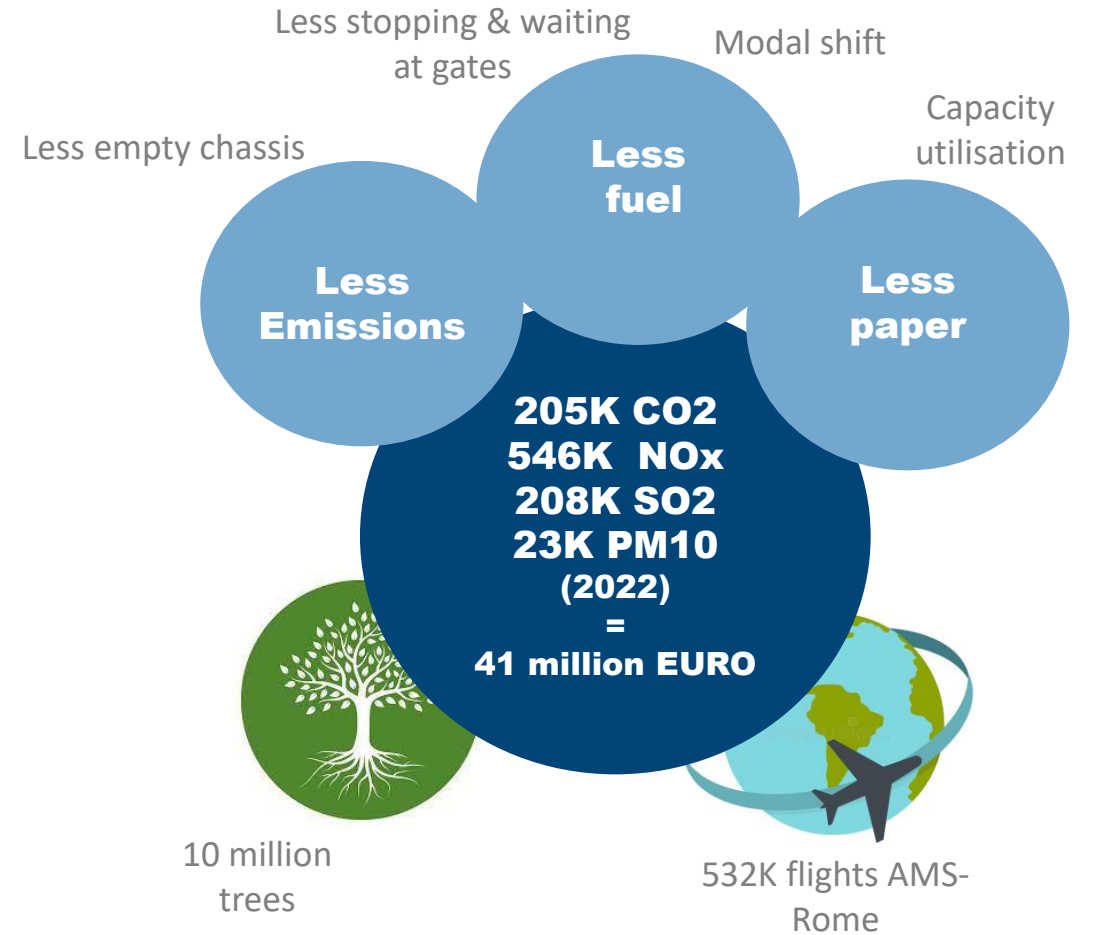
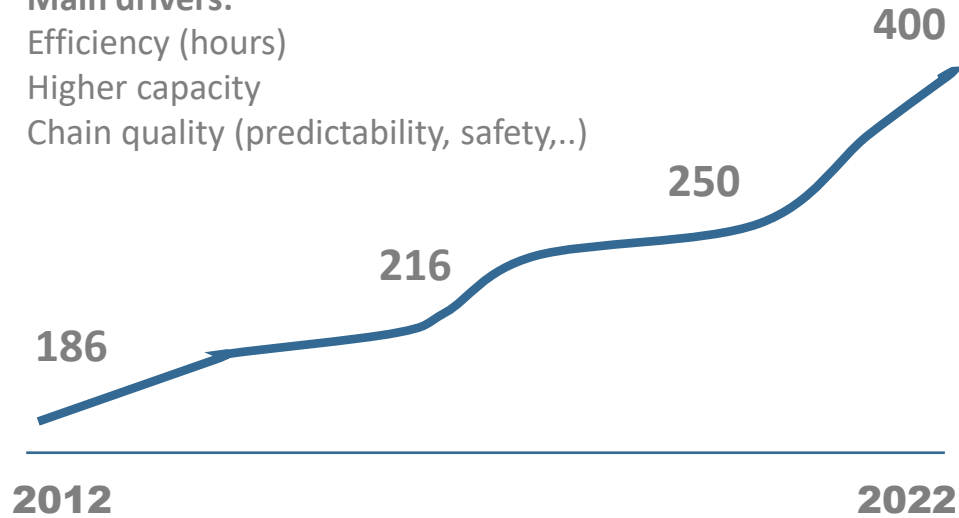
## Impact on chains



## Potential of emission reduction

### Direct added value Million €/year

Main drivers:  
Efficiency (hours)  
Higher capacity  
Chain quality (predictability, safety,..)



Huidige selectie: jaar: 2022 | alle maanden | servicenaam: alle servicenamen | alle organisaties | klanthoofdrol: alle klanthoofdrollen | facturabel: alles | transactie status: alle transactiestatussen

Periode

2022

Organisation short name, full name

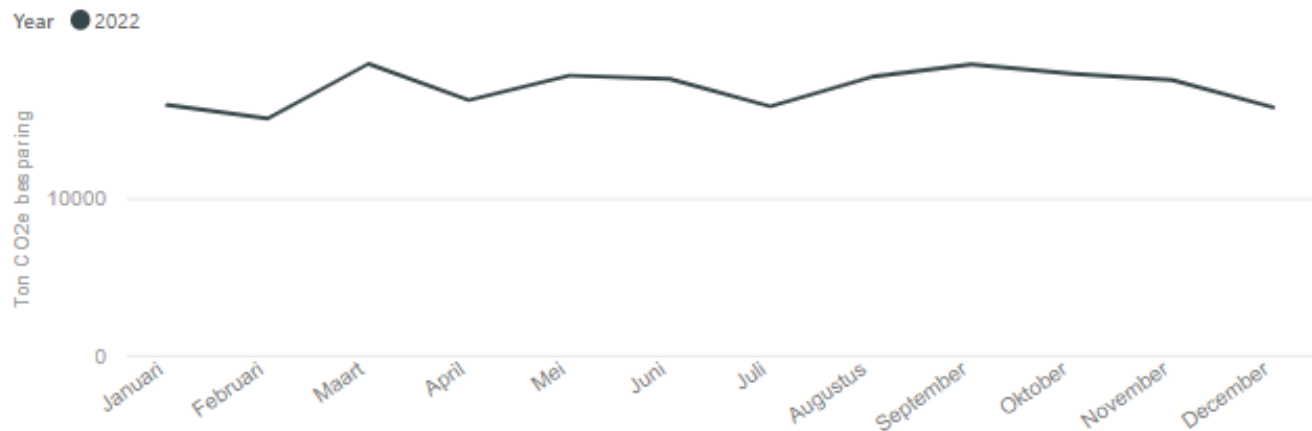
All

Service

All

Service effect

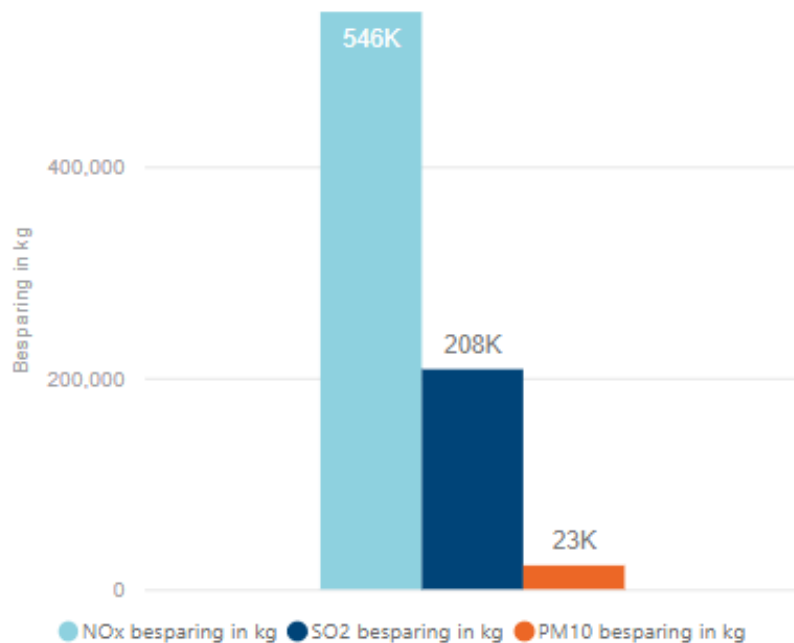
All



**205K**  
Ton CO2e besparing

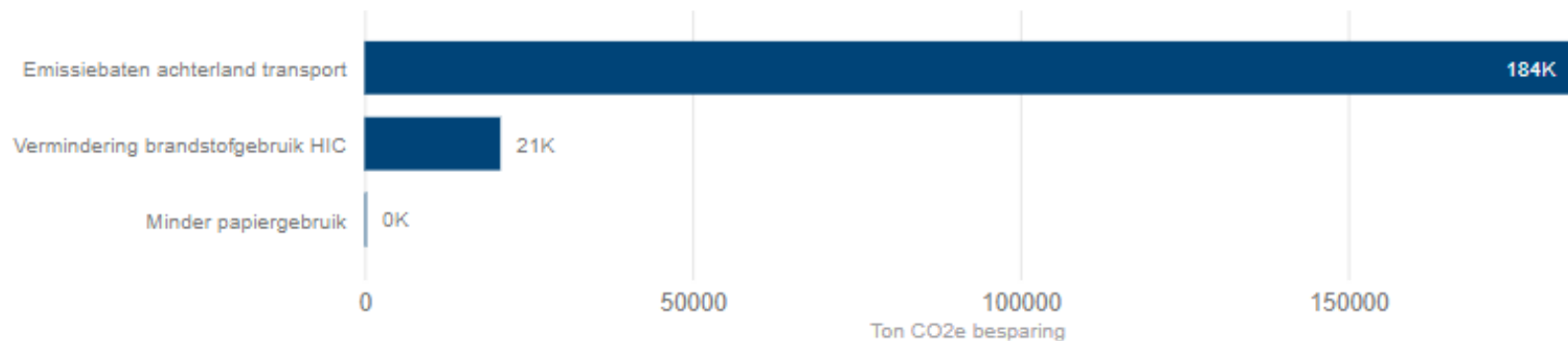
**€ 13M**  
CO2e besparing in euro's

Besparing NOx, SO2 en PM10



**€ 41M**  
Totale maatschappelijke besparing in euro's

Duurzaamheidseffect



CO2e besparing staat gelijk aan ...

10,246,696  
Bomen

532,828  
Economy class vluchten Ams-Rome

14,755,242  
Enkele reizen Ams-Parijs HSL

102,467  
Jaren autorijden op benzine

307,401  
Jaren elektriciteitsverbruik gem.huishouden NL

# Vision & Strategy on sustainability of Portbase 2023 - 2025

## Vision and goals per impact area linked to Sustainable Development Goals

Vision	Impact areas	Goals	SDG's
<p>In a world in which sustainability plays an increasingly important role, Portbase itself wants to make a positive contribution and facilitate port logistics in achieving the sustainability goals set by them.</p>	<p>Impact of own organisation</p>	<p><b>Portbase is seen as a sustainable organization for its employees:</b></p> <ul style="list-style-type: none"> <li>• Portbase offers a vital, safe and inclusive working environment</li> <li>• Portbase offers fair growth and development opportunities</li> <li>• Portbase reduces the ecological footprint of the organization</li> </ul>	
	<p>Impact through Portbase portfolio</p>	<p><b>Portbase contributes to achieving sustainability ambitions of the community by providing insight, services and data</b></p> <ul style="list-style-type: none"> <li>• Portbase contributes to a safe digital port through a joint approach to undermining;</li> <li>• Portbase contributes to an efficient and sustainable handling of goods</li> <li>• Portbase facilitates the adoption of innovations for sustainability</li> <li>• Portbase helps to comply with changing laws and regulations regarding sustainability</li> </ul>	
	<p>Impact on the port logistics ecosystem</p>	<p><b>Portbase increases the positive impact by connecting with port logistics ecosystem;</b></p> <ul style="list-style-type: none"> <li>• Portbase increases the data availability across the chains</li> <li>• Portbase actively shares knowledge, data and Port community services in a broader context</li> <li>• Portbase expands internationally, thereby increasing its impact</li> <li>• Portbase enters into partnerships to increase positive impact</li> </ul>	

# Are there any questions?

**Mrs. Stephanie van der Berg**

Strategy & Innovation Portfoliomanager

[s.vandenberg@portbase.com](mailto:s.vandenberg@portbase.com)

**Mr. Kevin Lammerts**

Senior Accountmanager

[k.lammerts@Portbase.com](mailto:k.lammerts@Portbase.com)

+31 6 2577 0861

portbase<sup>®</sup>

Keeping  
things  
moving