

# PONE BIOMETRICS

Making password vulnerabilities obsolete



## Presentation Nurnberg Conference

March 2nd.2023

# Who is PONE Biometrics?

We are a customer and research and development driven, cyber security company, mitigating data breach vulnerabilities with user friendly security keys and services.



# Problem

Password is the single most used attack vector for hackers.

10s

Cybersecurity attacks

80%

Originate on end-point devices

The human factor is the greatest  
cybersecurity vulnerability



# Everyone is a target

## LastPass was hacked -- again

Finnish IT services giant TietoEVRY discloses ransomware attack

By Lawrence Abrams

February 23

Hackerangrep mot søkere til UDs aspirantkurs. Kan misbrukes av fremmede makter, mener professor.

Hackerne har fått tilgang til søkerlistene til UDs aspirantkurs: – Søknadene inneholder enormt detaljert informasjon om livene deres, som kan brukes til identitetstyveri, sier professor Audun Jøsegg.

Alarmene hos GK-... på  
lørdag: «Kritiske per...  
ansatte er trolig på avveie

Kaotisk i Nordic Choice: I dag fikk kundene SMS om at passord er endret, mens innlogging er stengt

Hackernes beskjed til Amedia: «Viktige dokumenter er klare til å avsløres»

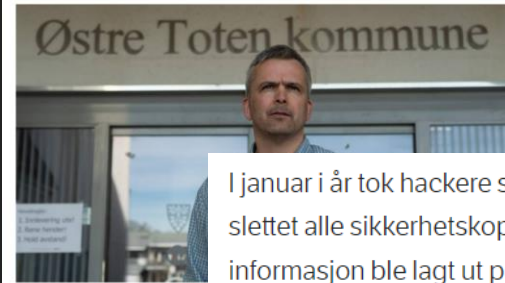
Datahackerne har fremstilt en tydelig trussel til Amedia etter angrepet natt til tirsdag 28. desember.

Selskapet skriver i en melding til Datatilsynet at de frykter at...  
personnummer er stjålet.

## Nortura utsatt for dataangrep

Varsel sendt: Østre Toten kommune utsatt for dataangrep. Angrepet fører blant annet til redusert aktivitet ved... millioner i bot etter dataangrepet

Aldri før har Datatilsynet gitt ut så store bøter til en kommune.



Marte Iren Noreng Treen  
Journalist  
Ragnhild Moen Hole  
Journalist  
Mette Vollan  
Journalist

Publisert 19. okt. 2021 kl. 14:10  
Oppdatert 19. okt. 2021 kl. 15:39

I januar i år tok hackere seg inn bak brannmurene til kommunen og slettet alle sikkerhetskopier og krypterte alle data. Sensitiv informasjon ble lagt ut på det mørke nettet.

Uber hack not just a... damage but reveals basic security

## Angrepet av hackere – hele kommunen rammet

Dataangrepet på Østre Toten kommune har lammet nærmest hele kommunen. – Over på penn og papir, sier ordfører.

## Norsvin hacket – krav om løsepenger

Norsvin er blitt utsatt for dataangrep. Angrepet fører blant annet til redusert aktivitet ved millioner i bot etter dataangrepet

Publisert 10. nov. 2021 kl. 10:41

Tromsø kommune utsatt for cyberangrep: – Kan ikke utelukke at sensitiv informasjon er på avveie

15.000 e-poster med spam ble forsøkt sendt fra kontoen til en ansatt i Tromsø kommune. Det kunne vært unngått dersom nasjonale sikkerhetsråd hadde vært fulgt.

## Angrepet mot Hurtigruten: Personopplysninger publisert på nett

Passasjerer på to ekspedisjonsskip skal være berørt av datalekkasjen.

## Videregående-elever i skolestart

Dataangrepet lillejulaften skaper trøbbel for tusenvis av elever og ansatte.

## NorDan utsatt for dataangrep

NorDan er utsatt for et pågående angrep mot våre IT-systemer. Forstyrrelse i arbeidsperioder med utilgjengelighet vil kunne oppstå mens vi jobber for å redusere konsekvensene av angrepet.

En uautorisert pålogging i et av kjernesystemene har resultert i at data har blitt kompromittert. Det fulle omfanget av angrepet og data som er på avveie er fortsatt uklart.

## ... frykter norske... mer enn pandemien:

... pandemi og klimaendringer, viser... en fersk... sekspert mener pandemien har gjort be...

Why should you be any different?

# Software solutions are not enough



2016

SMS codes and other one-time passwords are a security hazard



2022

Hardware based security keys is mandatory from 2024



Without Biometric ID check you **do not know** the actual user

## Who is Behind the Keyboard?

# Value proposition

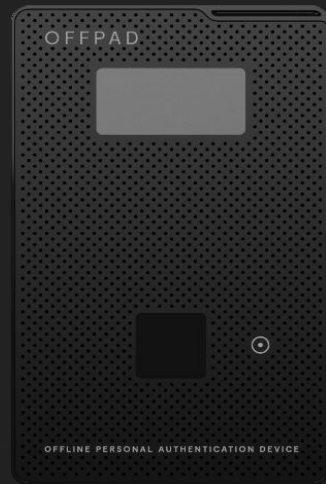
We make passwords obsolete and authentication more secure with the OFFPAD, a credit card sized, biometric device for physical and logical access.



Complying with all required Government certifications and GDPR

# Technology behind the card

## Innovative form factor



Size of a smart card



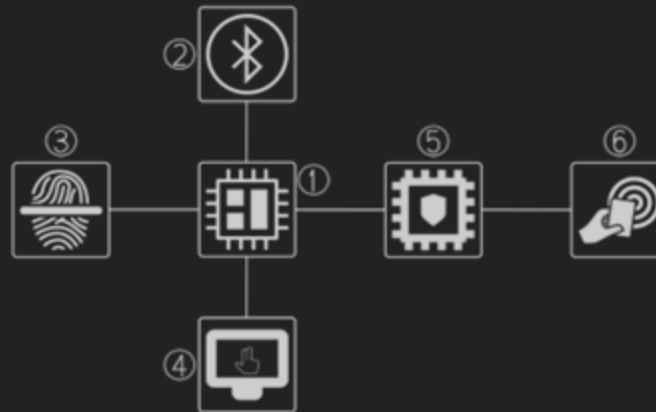
Thickness of approx.  
2.25mm

## Patented technology

**PATENT APPROVED:** WO2014057123 A1, Multi-mode computer with selector.

**PATENT APPROVED:** WO2014049027 A1, Network Security.

## Secure architecture



1. Micro Controller Unit, MCU
2. Bluetooth, BLE chip
3. Fingerprint, FP

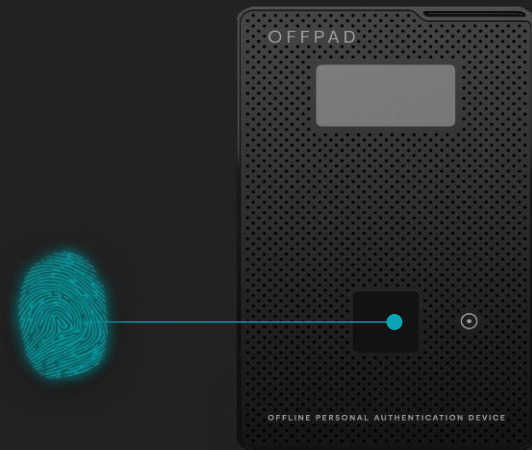
4. Screen + input – MCU
5. Secure Element, SE
6. NFC

## Features

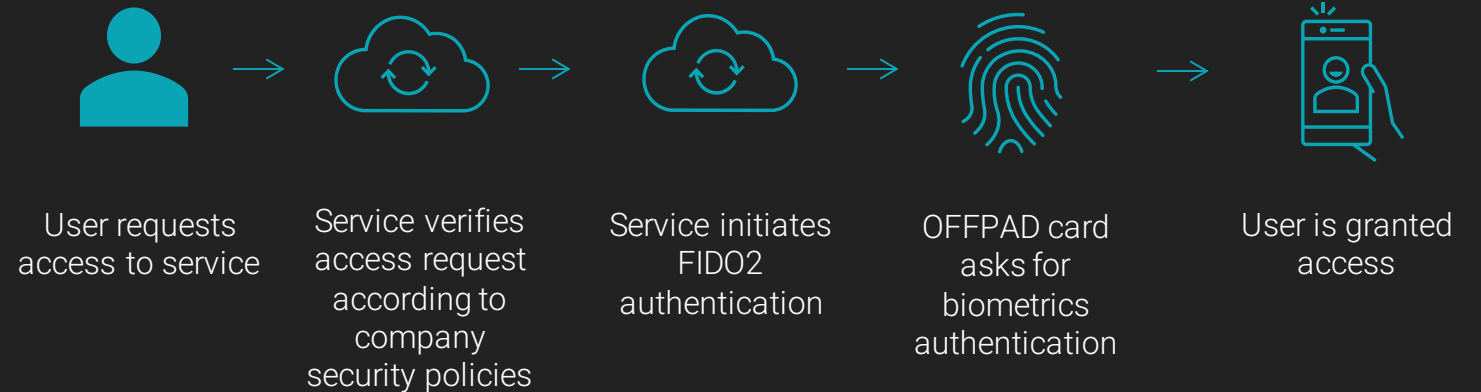
- Independent of mobile phone OEM communicates through extra secure BLE and NFC
- Root keys 100% controlled by end-users
- A secure biometric authentication attached

# Solution – The OFFPAD

This card will replace all your passwords with your unique fingerprint.



## Secure in seconds





# User benefits



Replace your PIN with your finger



No passwords

Secure channel

Easy of use

Secure from lobby to laptop

Contactless



No reset of passwords

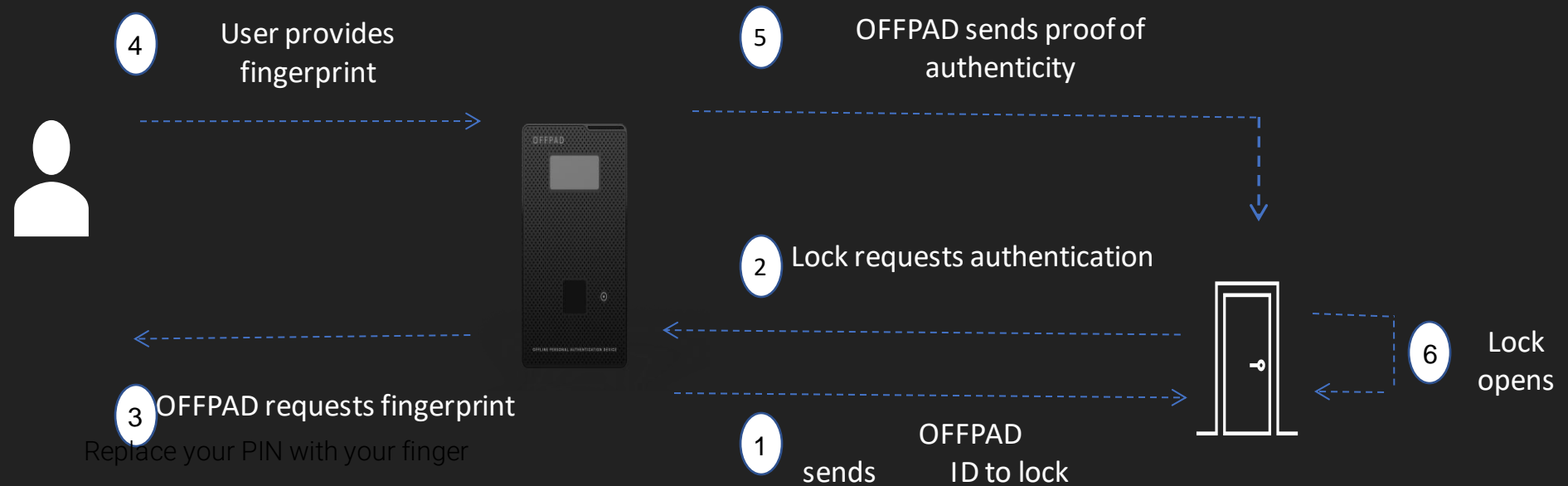


Independent of network



Quicker and seamless access

# Physical access – Replacing PIN with your finger



# Scandinavian Manufacturing & Design

EMG<sup>1</sup> with Triple-A customers in Norway, Sweden and Poland



## Manufacturing technology

- Well known form factor with a rather long life-cycle of 3-4 years and a light carbon footprint. Circular economy is prioritized throughout the manufacturing process

## Sustainable materials

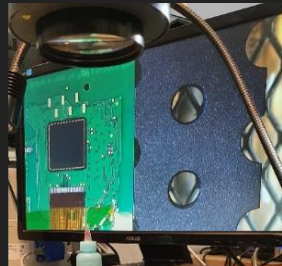
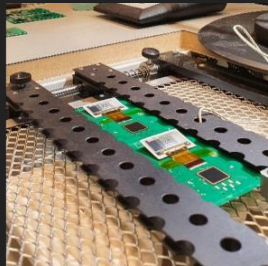
- Use of plastic substitute for biodegradable cards and bio-sourced materials to eco-packaging will be explored

## Truly local footprint

- Production facilities located in [Sweden] close to key target customers
- Components sourced from local suppliers ensuring full control of the value chain

## Efficient and reliable supply chain

- Short delivery and distribution with local partners to end-customers with minimum vulnerability for supply constraints



# Go to Market

## Sales Through Partners

- Leverage existing relationships between partner and their customers
- Completes partner offering to existing customers
- Utilize partners existing sales and support infrastructure
- PONE Biometrics will support in planning and implementation
- Involve partners and customers in R&D

## User licensing

- Annual Recurrent Revenue (ARR)
- Service Level Agreements (SLA)

## Value added services

- Device Management
- Key Management

# Value proposition to ENTRA

- ❑ Be part of a innovative digital proptech R&D offering with Norwegian technology
- ❑ Upgrade the security offering to demanding professional tenants



Complying with all required Government certifications and GDPR

# Gathering Media Attention

Extensive media coverage increasing customer awareness



## Selected news outlets

DN Dagens Næringsliv

digi.no Finansavisen

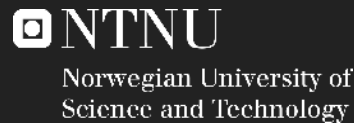
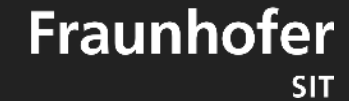
S&D  
Sécurité & Défense  
MAGAZINE

## Selected Awards & Certifications



fido  
alliance

# World class R&D and industrial partners



HACKING 4 ALLIES

# Team

Seasoned team of entrepreneurs, researchers and industry experts



**Jan-Erik Skaug**  
CEO and co-founder  
*Founded the company  
in 2017*

Previous experience



**Jean-Noël Georges**  
CSO  
*Joined in 2019*

Previous experience



**Jørgen Svare**  
CCO  
*Joined in 2021*

Previous experience



**Øystein Jåtog-Rød**  
COO  
*Joined in 2020*

Previous experience



**Trond P Hagen**  
CTO  
*Joined in 2022*

Previous experience



**Sigurhjörtur Snorrason**  
Head of Engineering  
*Joined in 2022*

Previous experience



**Prof Tjerand Silde PhD**  
Cryptography expert  
*Joined in 2022*

Previous experience



**Magnus Ringerud**  
PhD Candidate and  
Software Engineer  
*Joining in 2023*

Previous experience





# Board -Advisory

More than 250 years of combined experience

## Board of Directors



**Mandana Javaheri**  
Head of Security Solutions  
Microsoft  
*+25 years of experience*



**Hans Torin**  
Senior Advisor Torin & Co  
*+25 years of experience*



**Laila Danielsen**  
CEO Elliptic Labs AS  
*+25 years of experience*



**Espen Gylvik**  
CEO at Cyviz  
*+25 years of experience*



**Jan-Erik Skaug**  
CEO/Chairman at PONE  
*+30 years of experience*

## Advisory Board



**Arne Blystad Helme**  
Partner, Cyber Risk and  
Head of Healthcare at  
KPMG Norway  
*+30 years of experience*



**Morten Versvik**  
CTO Kahoot  
Founder of Kahoot  
*+20 years of experience*



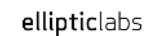
**Elisabet Haugsbø**  
CISO for hire in Zebra  
consulting, VP at Tekna  
*+15 years of experience*



**Jean-Noël Georges**  
CSO at PONE  
*+20 years of experience*



**Mette Wam**  
Vice CEO at Inmeta  
consulting  
*+30 years of experience*



Thank you!

